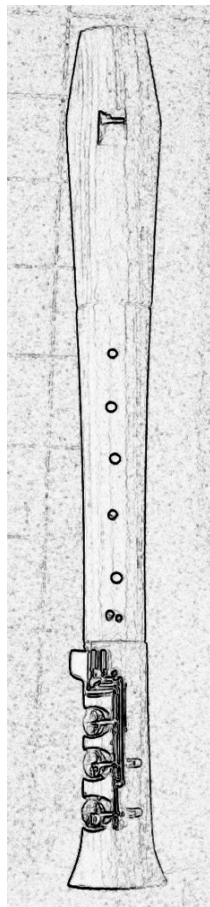


# Altblockflötenschule

## Teil B 2

### Technik





# Technische Übungen

c'' d'' e''

Artikulationen

Staccato und non legato

1



2



3



4

c'' d'' e'' f''



Staccato und non legato

5



c'' d'' e'' f'' g''

6



4

7

**h' c'' d'' e'' f' g''**

8

9

**h' c'' d'' e'' f' g'' a''**

10

11

**g' a' h' c'' d'' e'' f' g'' a''**

12

13

14 g' a' h' c'' d'' e'' f'' g'' a'' h'' c''

15

16

17

# Prelude - Baukasten

## 18 C-Dur

C-Dur Tonleiter



C-Dur Dreiklang



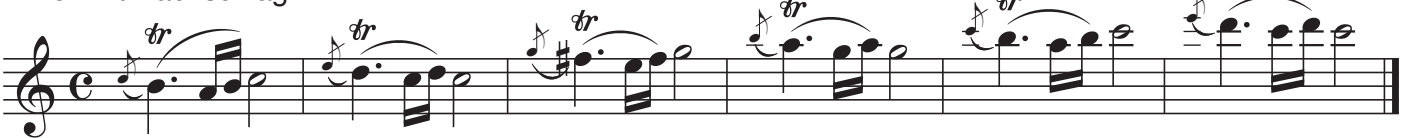
Kadenz I IV V I



Triller



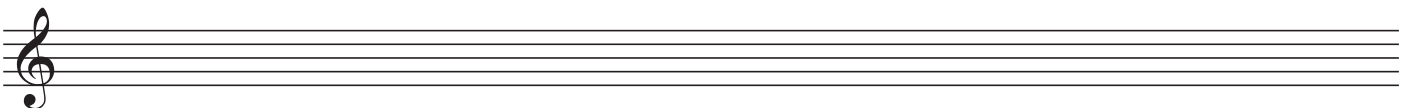
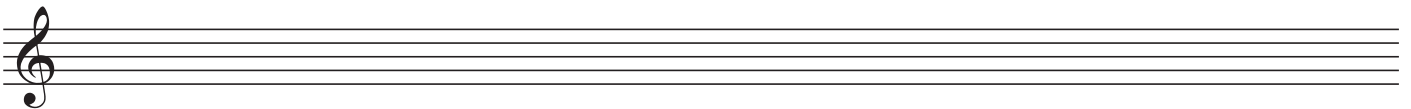
Triller mit Nachschlag



"Prelude" (Vorspiel) C-Dur



"Mein" Prelude in C



# 19 a-moll

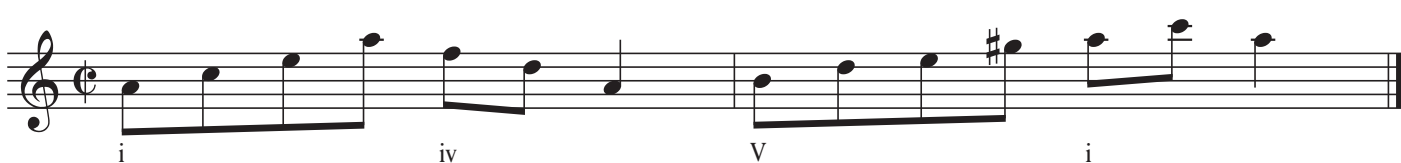
a-moll-Tonleiter



a-moll-Dreiklang



Kadenz i iv V i



Triller



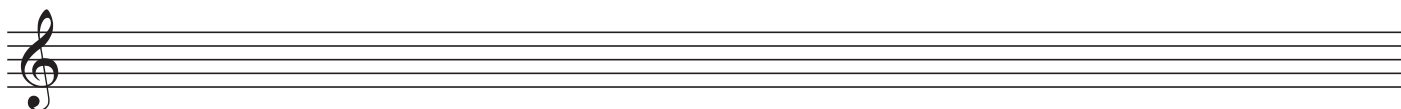
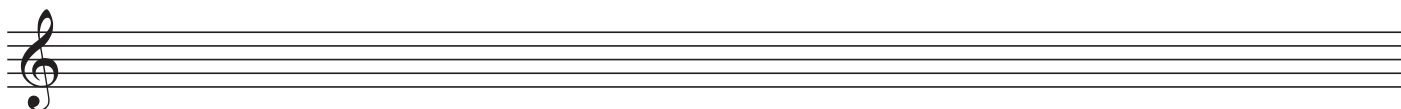
Triller mit Nachschlag



"Prelude" (Vorspiel) a-moll



"Mein" Prelude in a



# 20 F-Dur

F-Dur Tonleiter

Musical notation for the F-Dur (F major) scale in C major mode, starting on F4. The scale is written in treble clef with a key signature of one flat (Bb) and a common time signature (C). The notes are: F, G, A, Bb, C, D, E, F.

F-Dur Dreiklang

Musical notation for the F-Dur (F major) triad in C major mode, starting on F4. The notes are: F, A, C.

Kadenz I IV V I

Musical notation for a cadence in F-Dur (F major) in C major mode, starting on F4. The notes are: F, A, C (I); Bb, D, F (IV); G, Bb, D (V); F, A, C (I).

Triller

Musical notation for trills in F-Dur (F major) in C major mode, starting on F4. The notes are: F, G, A, Bb, C, D, E, F.

Triller mit Nachschlag

Musical notation for trills with grace notes in F-Dur (F major) in C major mode, starting on F4. The notes are: F, G, A, Bb, C, D, E, F.

"Prelude" (Vorspiel) F-Dur

Musical notation for the first line of the "Prelude" (Vorspiel) in F-Dur (F major) in C major mode, starting on F4. The notes are: F, G, A, Bb, C, D, E, F.

Musical notation for the second line of the "Prelude" (Vorspiel) in F-Dur (F major) in C major mode, starting on F4. The notes are: F, G, A, Bb, C, D, E, F.

"Mein" Prelude in F

Musical notation for the first line of the "Mein" Prelude in F-Dur (F major) in C major mode, starting on F4. The notes are: F, G, A, Bb, C, D, E, F.

Musical notation for the second line of the "Mein" Prelude in F-Dur (F major) in C major mode, starting on F4. The notes are: F, G, A, Bb, C, D, E, F.



# 21 d-moll

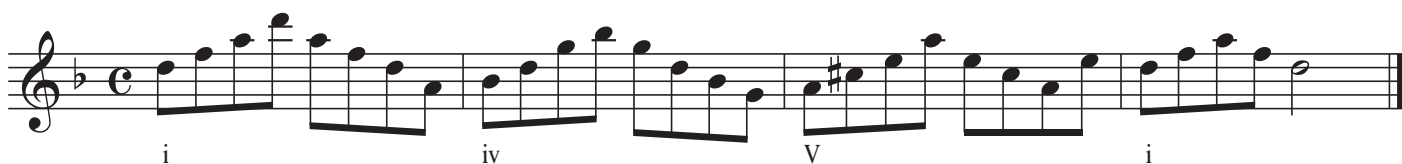
d-moll Tonleiter



d-moll Dreiklang



Kadenz i iv V i



Triller



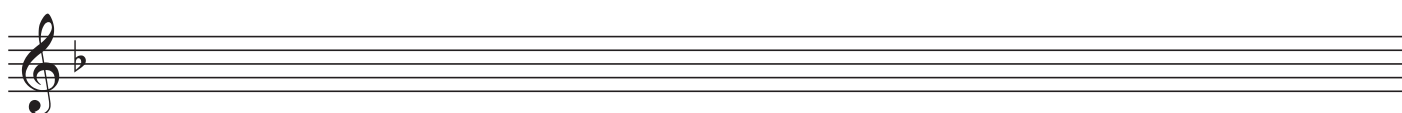
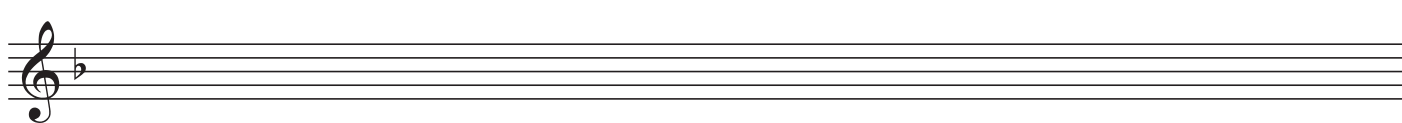
Triller mit Nachschlag



"Prelude" (Vorspiel) d-moll



"Mein" Prelude in d



# 22 G-Dur

G-Dur Tonleiter

Musical notation for the G-Dur scale (one sharp, treble clef, common time). The scale is written on a single staff, starting on G4 and ascending to G5, then descending back to G4. The notes are G, A, B, C, D, E, F#, G, F#, E, D, C, B, A, G.

G-Dur Dreiklang

Musical notation for the G-Dur triad (one sharp, treble clef, common time). The triad is written on a single staff, starting on G4 and ascending to G5, then descending back to G4. The notes are G, B, D, G, B, D, G.

Kadenz I IV V I

Musical notation for a cadence in G-Dur (one sharp, treble clef, common time). The cadence is written on a single staff, starting on G4 and ascending to G5, then descending back to G4. The notes are G, B, D, G, B, D, G, F#, E, D, C, B, A, G. Roman numerals I, IV, V, and I are placed below the first, fourth, fifth, and eighth notes respectively.

Triller

Musical notation for a trill in G-Dur (one sharp, treble clef, common time). The trill is written on a single staff, starting on G4 and ascending to G5, then descending back to G4. The notes are G, A, B, C, D, E, F#, G, F#, E, D, C, B, A, G. Trill markings (tr) are placed above the notes G, A, B, C, D, E, and F#.

Triller mit Nachschlag

Musical notation for a trill with a grace note in G-Dur (one sharp, treble clef, common time). The trill is written on a single staff, starting on G4 and ascending to G5, then descending back to G4. The notes are G, A, B, C, D, E, F#, G, F#, E, D, C, B, A, G. Trill markings (tr) are placed above the notes G, A, B, C, D, E, and F#. Grace notes are placed above the notes A, B, C, D, E, and F#.

"Prelude" (Vorspiel) G-Dur

Musical notation for the "Prelude" (Vorspiel) in G-Dur (one sharp, treble clef, common time). The piece is written on two staves. The first staff starts on G4 and ascending to G5, then descending back to G4. The notes are G, A, B, C, D, E, F#, G, F#, E, D, C, B, A, G. The second staff starts on G4 and ascending to G5, then descending back to G4. The notes are G, A, B, C, D, E, F#, G, F#, E, D, C, B, A, G. A trill marking (tr) is placed above the note G in the second staff.

"Mein" Prelude in G

Musical notation for the "Mein" Prelude in G (one sharp, treble clef, common time). The piece is written on two staves. The first staff starts on G4 and ascending to G5, then descending back to G4. The notes are G, A, B, C, D, E, F#, G, F#, E, D, C, B, A, G. The second staff starts on G4 and ascending to G5, then descending back to G4. The notes are G, A, B, C, D, E, F#, G, F#, E, D, C, B, A, G.

## 23 e-moll

e-moll Tonleiter



e-moll Dreiklang



Kadenz i iv V i



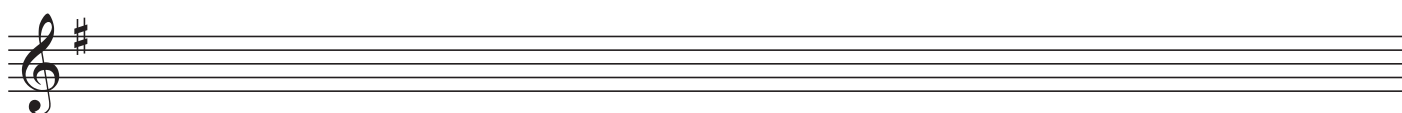
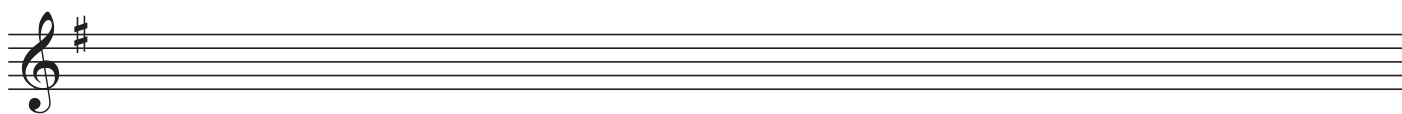
Triller



Triller mit Nachschlag



"Prelude" (Vorspiel) e-moll



# 24 B-Dur

B-Dur Tonleiter

Musical notation for the B major scale (B-Dur Tonleiter) in treble clef, C-clef, and common time. The scale is written as a single melodic line with a final whole note B.

B-Dur Dreiklang

Musical notation for the B major triad (B-Dur Dreiklang) in treble clef, C-clef, and common time. The triad is written as a single melodic line.

Kadenz I IV V I

Musical notation for the B major cadence (Kadenz I IV V I) in treble clef, C-clef, and common time. The cadence is written as a single melodic line with Roman numerals I, IV, V, and I below the notes.

Triller

Musical notation for trills (Triller) in treble clef, C-clef, and common time. The trills are written as a single melodic line with 'tr' markings above the notes.

Triller mit Nachschlag

Musical notation for trills with grace notes (Triller mit Nachschlag) in treble clef, C-clef, and common time. The trills are written as a single melodic line with 'tr' markings above the notes.

"Prelude" (Vorspiel) B-Dur

Musical notation for the "Prelude" (Vorspiel) in B major (B-Dur) in treble clef, C-clef, and common time. The piece is written as a single melodic line.

"Mein" Prelude in B

Musical notation for the "Mein" Prelude in B major in treble clef, C-clef, and common time. The piece is written as two staves.

# 25 g-moll

g-moll Tonleiter



g-moll Dreiklang



Kadenz i iv V i



Triller



Triller mit Nachschlag



"Prelude" (Vorspiel) g-moll



"Mein" Prelude in g

