

Altblockflötenschule

Teil B

Pop

Gospel/Jazz/Blues

Technik

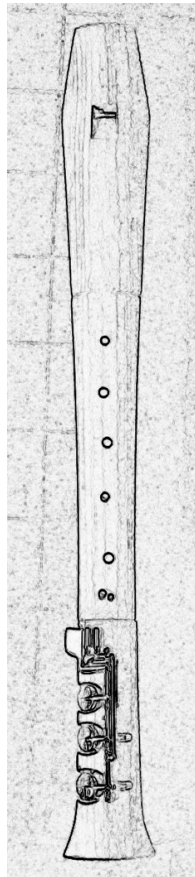
moderne Spielweisen

Improvisation

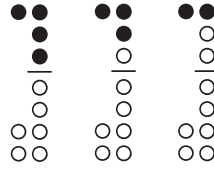
Altblockflötenschule

Teil B 1

Pop
Gospel/Jazz/Blues



c'' d'' e''



1 Song Number One

Binär! ♩ = ♩

Am7 Em7 Am7 Em7 Am7 Em7 Am7 DmG C Am7 DmG C Am7

DmG C Am7 E7 Am7 Em7 Am7 Em7 Am7 Em7 Am7

2 Spiritual

Trad.

Swing! ternär ♩ = ♩³

C Am7 Dm7 G13 C

Did-n't old No - ah build the ark? Buildt it out of a hick - o - ry bark.

c'' d'' es'' e''



3 Thoughtful

AD

Swing! ternär ♩ = ♩³

C F7 C F7 C F7 G7 C

4 Come On, Kids!

AD

Binär! ♩ = ♩

C F7

G7 F7 1. 2. C

5 First Blues

AD

Swing! ♩ = ♩³ ♩

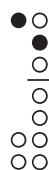
C7 F7

dis = es

C7 G7 F7 C7

Detailed description: This block contains the musical notation for '5 First Blues'. It consists of two staves of music in C major, 4/4 time. The first staff starts with a C7 chord and contains a melodic line with a triplet of eighth notes. The second staff continues the melody with various chords (G7, F7, C7) and ends with a double bar line. The text 'dis = es' is written below the first staff.

c" d" es" f"



6 Rock It!

AD

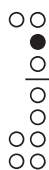
Binär! ♩ = ♩

F Cm7 F Cm7 F Cm7 F

Cm7 F Cm7 F

Detailed description: This block contains the musical notation for '6 Rock It!'. It consists of three staves of music in F major, 4/4 time. The first staff starts with an F chord and contains a melodic line with accents. The second and third staves continue the melody with various chords (Cm7, F) and end with double bar lines.

c" d" e" f" g"



7 Oh, when the Saints

Trad.

Binär! ♩ = ♩

N.C. C C/B C/A C Am Dm7

G7 C C7 F Fm Em Am Dm7 G9 C

Oh when the saints go march-ing in, oh when the Saints go march-ing in,
then, Lord, let me be in this num-ber, ——— when the Saints go march-ing in.

Detailed description: This block contains the musical notation for '7 Oh, when the Saints'. It consists of two staves of music in 2/4 time. The first staff has a 7/8 time signature and contains a melodic line with lyrics. The second staff continues the melody with various chords (G7, C, C7, F, Fm, Em, Am, Dm7, G9, C) and ends with a double bar line.

8 Little Song

Binär! ♩ = ♩

AD

C G Am F C G

Am F C Am7 Dm7 G7

C Am7 Dm7 G7 C G

Am F C G C F C

Detailed description: This block contains the musical notation for '8 Little Song'. It consists of four staves of music in 4/4 time. The first staff has a treble clef and a common time signature. The second staff has a treble clef and a common time signature. The third staff has a treble clef and a common time signature. The fourth staff has a treble clef and a common time signature. The notes are mostly quarter and eighth notes, with some rests. The chords are indicated above the notes.

9 Happy again

Swing! ternär ♩ = ♩³

AD

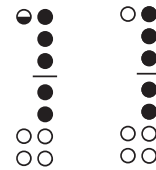
C Am7 Dm7 G7 C G C

Dm7 C G

C Am7 Dm7 G7 C G C

Detailed description: This block contains the musical notation for '9 Happy again'. It consists of three staves of music in 3/4 time. The first staff has a treble clef and a 3/4 time signature. The second staff has a treble clef and a 3/4 time signature. The third staff has a treble clef and a 3/4 time signature. The notes are mostly quarter and eighth notes, with some rests. The chords are indicated above the notes.

c'' d'' e'' f'' g'' a''



10 Kumbaya

Binär! ♩ = ♩

Trad.

C F C Em F G N.C.

Detailed description: This block contains the musical notation for '10 Kumbaya'. It consists of one staff of music in 3/4 time. The staff has a treble clef and a 3/4 time signature. The notes are mostly quarter and eighth notes, with some rests. The chords are indicated above the notes.

Kum - ba - ya, my Lord, kum - ba - ya. Kum - ba - ya, my Lord, kum - ba - ya. Kum - ba -

C F C G7 C G7 C

Detailed description: This block contains the musical notation for '10 Kumbaya'. It consists of one staff of music in 3/4 time. The staff has a treble clef and a 3/4 time signature. The notes are mostly quarter and eighth notes, with some rests. The chords are indicated above the notes.

ya my Lord, kum - ba - ya, my Lord, Kum - ba - ya.

11 Michael, Row The Boat Ashore

Binär! ♩ = ♩

Trad.

Mi - chael, row the boat a - shore, Hal - le - lu - ja, Mi - chael row the boat a -
 shore, Hal - le - lu - ja.

Chords: C, F, C, em, F, G, C/G, G, C

12 What A Mourning!

Swing! ternär ♩ = ♩

Trad.

My Lord, what a mourn-ing, My Lord, what a mourn-ing, My Lord, what a mourn-ing, When the
 stars be-gin to fall. *Fine* You'll hear the trum - pet sound, To wake the na - tions un - der -
 ground, Look - ing to my God's right hand, When the stars be-gin to fall.

Chords: C, G, Am, Em, C, F6, G, C, G, Am, F, C/G, G, C, C, G, C, F, G, C, G7

D.C. al Fine

c" d" es" e" f" g" a"

13 Syncopated Song

Swing! ♩ = ♩³

AD

Chords: C, F7, C, F7, C, F7, C, C6, F9, C6, F9, C, F7, C, F7, C

c" d" f" g" a" = pentatonische Tonleiter in F

Πεντα = Penta = fünf auf griechisch

Pentatonik in F



14 Tom Dooley in F

Trad.

15 The Gospel Train

Trad.

The gos - pel Train's a - com - in', I hear it just at hand, I hear the car wheel
rum-blin' And roll - in' thro the land. Git on board, litt - le chil - dren, Git on board, litt - le
chil - dren, Git on board, litt - le chil - dren, There's room for man - y more.

16 Give Me That Old Time Religion

Trad.

D.C. al Fine

17 Blow Your Trumpet, Gabriel!

Trad.

Musical notation for 'Blow Your Trumpet, Gabriel!' in G major, 2/4 time. The piece consists of two staves of music. The first staff contains the first six measures, and the second staff contains the remaining six measures. Chord symbols are placed above the notes: F, C, Dm, C, F, F/A, Bb, C, F, C, F, C7, F.

a' c'' d'' e'' f'' g'' a''



18 Rondo

Binär! ♩ = ♩

AD

Musical notation for 'Rondo' in G major, 2/4 time. The piece consists of four staves of music. Chord symbols are placed above the notes: Dm, Bb, C, Dm, Dm, Bb, C, Dm, Dm, G7, Dm, G7, Em7, A7, Em7, A7, Dm, Bb, C, Dm, Dm, Bb, C, Dm, Dm, Bb, C, Dm, Bb, Bb6, A7, Dm, Am, Bb, F, Bb, Bb6, A7, Dm, Bb, C, Dm, Dm, Bb, C, Dm.

19 Sad Song

AD

Musical notation for 'Sad Song' in G major, 2/4 time. The piece consists of two staves of music. Chord symbols are placed above the notes: Dm7, Am7, Dm7, Am7, Cmaj7, Dm7, E7, Am7, D, Am7, D, Bm7, E7, A7, Dm7, Am7, Dm7, Am7, Dm.

g' a' c'' d'' e'' f'' g'' a''



20 Waltz

AD

Musical notation for '20 Waltz' in 3/4 time. The melody is written on a single staff with treble clef. Chords are indicated above the notes: Cmaj7, Am7, D7, G, Cmaj7, Am7, Dm7, G7, Cmaj7, Fmaj7, Em7, Am7, Dm7, G7, Fmaj7, Em7, Am7, Cmaj7, G, Cmaj7.

21 Who Buildt The Ark?

Trad.

Musical notation for '21 Who Buildt The Ark?' in 2/4 time. The melody is written on a single staff with treble clef. Chords are indicated above the notes: C, G, C, F, C, G, C, C, Am, D7, G7, C. The lyrics are: Who Buildt the ark? No - ah, No - ah! Who Buildt the ark? Bro - ther No - ah buildt the ark! Did - n't old No - ah build the ark? Buildt it out of a hick - o - ry bark.

22 By An' By

Swing! ♩ =

Trad.

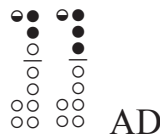
Musical notation for '22 By An' By' in 2/4 time. The melody is written on a single staff with treble clef. Chords are indicated above the notes: C, dm7/C, C, dm7/C, C, dm7/C, C, F, C, G, am, C, dm7/C, C, F, C, G, am, C, dm7/C, C. The lyrics are: Oh, By an' by, By an' by, I'm gon - na lay down dis hea - vy load. Oh By an' by, By an' by, I'm gon - na lay down dis hea - vy load. I know my robe's goin' to fit me well I'm gon - na lay down dis hea - vy load. I tried it on at de gates of hell I'm gon - na lay down dis hea - vy load.

D.C. al Fine

23 Swing low

C F C C am Dm7 G7
 Swing low, sweet char - i - ot, Com - in' for to car - ry me
 C F C am dm7 G7 C
 low, sweet char - i - ot, Com - in' for to car - ry me
 C F F C C am
 I looked o - ver Jor - dan, and what did I see, Com - in' for to car - ry me
 Dm7 G7 C F C Am F Dm7 G7 C
 band of an - gels com - in' af - ter me, Com - in' for to car - ry me

c''' und d'''



24 Low And High

C G Am F C G Am F C Am7 F7 C
 C Am7 F7 C C G C F7 C G
 C F7 C G7 C C G7 C

25 Wade in The Water

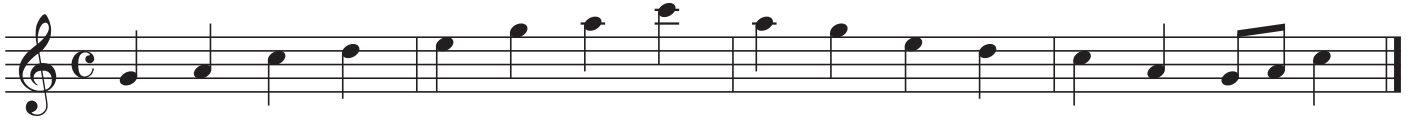
Swing! ♩ = $\frac{3}{4}$ N.C.

Trad.

A7
 Dm
 Bb Am Dm Dm G7 Dm
 Fine
 Am Dm Dm G7 Am Dm

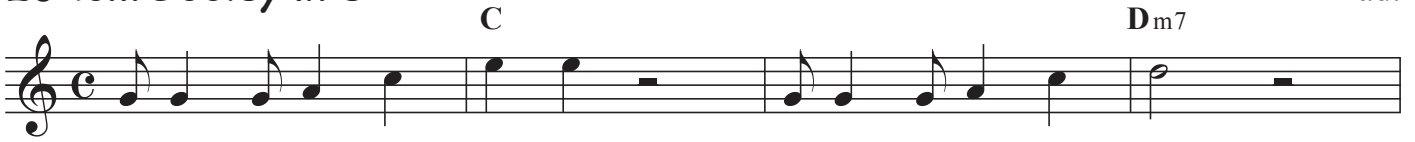
$g' a' c'' d'' e'' =$ pentatonische Tonleiter in C

Pentatonik in C



26 Tom Dooley in C

Trad.



27 Traditional Rhyme For Kids: Amasee

Trad.



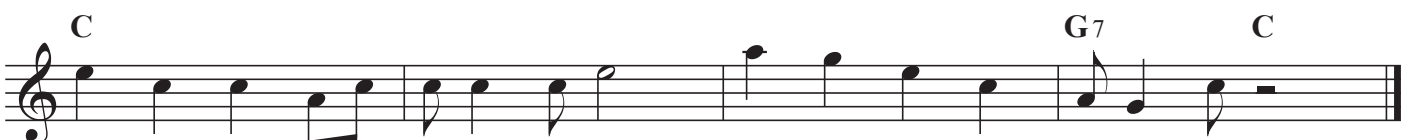
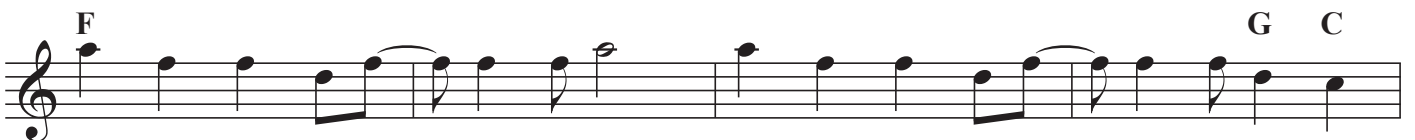
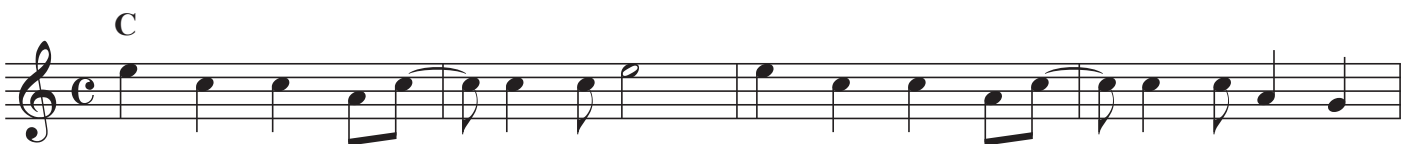
Take your part - ner down the line, A - ma - see, a - ma - see,



Swing your part - ner, swing a - gain, A - ma - see, a - ma - see.

28 Amasee Today

AD



29 Somebody's Knocking

Trad.

C dm7 C/E F

Some-bod - y's knock - in' at your door, _____

C dm7 C/E F

Some-bod - y's knock - in' at your door. _____

C dm7 C/E F

Oh, _____ sin - ner, why don't you ans - wer?

C dm7 C/E F

Some-bod - y's knock - in' at your door. _____ **Fine**

C dm7 C/E F

Knocks like the Lord. _____ Knocks like the Lord. _____

C dm7 C/E F

Knocks like the Lord. _____ Knocks like the Lord. _____ **D.S. al Fine**

30 All Night, All Day

Trad.

F gm7 am7 B \flat 7 gm7 F/A B \flat C11 C7

All Night, all _____ day, an - gels watch - ing o - ver me, my lord. _____

F gm7 am7 B \flat 7 am7 B \flat 7 C11 F

All Night, all _____ day, an - gels watch - ing o - ver me. _____ **Fine**

F B \flat A7 dm gm7 F/A B \flat C11 C7 F B \flat

Day is dy - in' in _____ the west, an - gels watch - in' o - ver me my Lord. Sleep, my child, and _____

A7 dm am7 B \flat 7 C11 F

take _____ your rest, an - gels watch - in' o - ver me. _____ **D.C. al Fine**

31 Nobody Knows

Trad.

F B \flat 7 F dm7 F B \flat 7 C7
 No - bo - dy knows the trou-ble I've seen. No - bo - dy knows, but Je - sus.
 F B \flat 7 F D7 gm7 C7 B \flat F
 No - bo - dy knows the trou-ble I've seen. Glo - ry hal - le - lu - ja. Some -
 F am F am F dm7 gm7 C7
 times I'm up, some - times I'm down. Oh yes Lord. Some -
 F am E dm gm7 C7/G F
 times I'm al - most to the ground, — Oh, yes, Lord

32 Who Buildt The Ark? in F

Trad.

F C F C B \flat C F
 Who Buildt the ark? No - ah, No - ah! Who Buildt the ark? Bro-ther No-ah buildt the ark!
 F Dm G7 C7 F
 Did-n't old No - ah build the ark? Buildt it out of a hick-o - ry bark.

33 Rock It! diesmal in C

AD

C Gm7 C Gm7 C Gm7 C
 Gm7 C Gm7 C
 C Gm7 C Gm7 C

12-taktige Bluesform

C | C | C | C |
 F | F | C | C |
 G | F | C | C ||

12-taktige Bluesform

I | I | I | I |
 IV | IV | I | I |
 V | IV | I | I ||

Bluestonleiter in C



12-taktige Bluesform

C | F | C | C |
 F | F | C | C |
 G | F | C | G ||



ais = b
 dis = es
 ges = fis

34 Simple Blues

AD

Typisch für den Blues-Text:
 pro 4 Takte eine Aussage: also drei Sätze.
 Die erste Aussage wird wiederholt, und dann kommt
 die Antwort

35 Backwater Blues

Trad.

It rains five days and the sky turns dark as night, _____ it
 rains five days and the sky turns dark as night, _____ there is
 trou - ble tak - ing place in the low lands at _____ night. _____

36 Dark Sky

AD

Musical score for "Dark Sky" in treble clef, 4/4 time. The score consists of four staves of music. The first three staves each begin with a **D_m** chord and feature a melodic line with eighth and quarter notes. The fourth staff continues the melody and includes a **B^b7** chord. The fifth staff introduces a new melodic line with chords **F**, **C**, **B^b**, **F**, **F**, **C**, **D_m**, and **A⁷**. The sixth staff returns to the **D_m** chord and includes a **B^b7** chord.

37 Good Morning Blues

AD

Musical score for "Good Morning Blues" in treble clef, 4/4 time. The score consists of five staves of music. The first staff begins with a **C⁷** chord and features a melodic line with eighth and quarter notes. The second staff continues the melody with chords **C⁷**, **G⁷**, **F⁷**, and **C⁷**. The third staff continues with a **C⁷** chord. The fourth staff features chords **F⁷** and **C⁷**. The fifth staff concludes the piece with chords **G⁷**, **F⁷**, and **C⁷**.

38 Blue Sensation

AD



Musical score for "Blue Sensation" in C major, 4/4 time. The score consists of four staves of music. The first staff contains the main melody with chords: C7, F7, C7, $\flat\Omega$, F7, and F#dim. The second staff contains a bass line with chords: C7, B7, Em7b5, A7, Dm7, G7, C7, A7, Dm7, and G+. The third and fourth staves continue the melody and bass line with similar chord progressions, ending with a C chord.

39 Greensleaves

Anonymus

Musical score for "Greensleaves" in D minor, 6/8 time. The score consists of seven staves of music. The first staff contains the main melody with chords: Dm7, Fmaj7, Cmaj7, Dm7, Bbmaj7, A7, Dm7, and Fmaj7. The second staff contains a bass line with chords: Cmaj7, Dm7, A7, Dm7, Fmaj7, and Cmaj7. The third staff continues the melody and bass line with chords: Dm7, A7, Fmaj7, Cmaj7, Dm7, A7, and Dm7. The fourth staff contains a bass line with chords: Dm7, Fmaj7, Cmaj7, Dm7, Bbmaj7, and A7. The fifth staff continues the melody and bass line with chords: Dm7, Fmaj7, Cmaj7, Dm7, A7, and Dm7. The sixth and seventh staves continue the melody and bass line with chords: Fmaj7, Cmaj7, Dm7, A7, and Dm7. The score concludes with a Diminution/Variation section marked AD.

40 Calypso

AD

Musical score for '40 Calypso' in G major, 4/4 time. The score consists of five staves of music. The melody is primarily eighth-note based. Chord progressions are indicated above the notes: F, Bb, C7, F, Dm, Gm, C7, F, F, Bb, C7, F, Dm, Gm, C7, F, Dm, Gm, C7, F.

41 Morenita do Brazil

G. Farraito

Musical score for '41 Morenita do Brazil' in C major, 4/4 time. The score consists of five staves of music. The melody features a mix of eighth and quarter notes. Chord progressions are indicated above the notes: C, Em, F, G, C, Em, F, G, C, G7, C, G7, C, Em, F, G, C, Am, Dm, G, C, Em, F, G7, C, Em, F, G7, C, Em, F, G7, C, Am, Dm, G7, C.

42 All My Little Duckies

Variationen über ein sehr bekanntes Kinderlied

Blues

AD

Chords: C7, F7, C7, F7

Chords: C7, G7, F7, C7, G7, C7

Detailed description: This section contains two staves of music in 4/4 time. The first staff features a melody with accents on the first four notes (quarter notes), followed by a half note and a whole note. The second staff provides a harmonic accompaniment with a similar rhythmic pattern, ending with a double bar line and repeat dots.

Jazzy

Chords: Cmaj7, Am7, Dm7, G7, Dm7, G9, Cmaj7, Am7, Dm7, G9

Chords: Cmaj7, Am7, Dm7, G7, Cmaj7, Am7, Dm7, G7, Cmaj7

Detailed description: This section contains two staves of music in 4/4 time. The first staff features a more complex melody with eighth and sixteenth notes, including ties and slurs. The second staff provides a harmonic accompaniment with a similar rhythmic pattern, ending with a double bar line and repeat dots.

Reggae

Chords: C, F, C, F

Chords: C, G7, C, G7, C

Detailed description: This section contains two staves of music in 4/4 time. The first staff features a melody with a reggae feel, using eighth notes and quarter notes. The second staff provides a harmonic accompaniment with a similar rhythmic pattern, ending with a double bar line and repeat dots.

Mysterious

Chords: C, Gm9, F6, C, AbBb, C, C6, Gm9, Bbmaj7, Am7Ab+, Fm7, G7, C

Chords: C, Gm9, F6, C, AbBb, C, C6, Gm9, Bbmaj7, Am7Ab+, Fm7, G7, C

Detailed description: This section contains two staves of music in 4/4 time. The first staff features a melody with a mysterious feel, using half notes and quarter notes. The second staff provides a harmonic accompaniment with a similar rhythmic pattern, ending with a double bar line and repeat dots.

Latin

Chords: C, Am7, Dm11, G9, Dm11, G9, C, Am7, Dm11, G9

Chords: C, Am7, Dm7, G9, C, Am7, Dm7, G9, C

Detailed description: This section contains two staves of music in 4/4 time. The first staff features a melody with a Latin feel, using eighth notes and quarter notes. The second staff provides a harmonic accompaniment with a similar rhythmic pattern, ending with a double bar line and repeat dots.

Waltz

Chords: C, A7, F, G, C, F, G, C, Dm7, G7, Em7, G6, F6, G7, C

Chinese

Chords: C, C6, F, C, F, C, G, C, Am, C, Am, C, Am, C

Rap/Rock

N.C.

Al-le mei-ne Ent-chen swim-men auf dem See! Köpf-chen un-ter Was-ser Schwänz-chen in die Höh'!

Chords: Dm, Asus Am, Dm, Dm, Asus Am, Dm

Entchen! Entchen!

Ent-chen! Entchen!

Popballade

Chords: C, Am, F, C, F, C, Em, F, G, C

Finale

Chords: Cmaj7, Em7, E7, A7, D7, Gmaj7, Em7, Am7, D7, Gmaj7, G6, Dm7, G7, Cmaj7, Am7, Dm9, G11, Cmaj7, C7, Dm7, G7, Cmaj7, Am7, Dm9, G11, Cmaj7

43 This Feeling!

AD

Musical score for "This Feeling!" in C major, 4/4 time. The score consists of six staves of music. The first staff begins with a C chord and a quarter rest, followed by a melody of eighth notes. The second staff continues the melody with a half rest at the start. The third staff features a melody of eighth notes with a final half note. The fourth staff continues the melody with a half rest at the start. The fifth staff continues the melody with a half rest at the start. The sixth staff concludes the piece with a final chord of C major.

Chord progression: C, A7, Dm7, G7, C, E7, Am7, Dm7, G7, C, A7, Dm7, G7, C, F, C, C, A7, Dm7, G7, C, E7, Am7, Dm7, G7, C, A7, Dm7, G7, C, F, G, C.

44 Down In The Forest

AD

Musical score for "Down In The Forest" in C major, 4/4 time. The score consists of four staves of music. The first staff begins with a C chord and a quarter rest, followed by a melody of eighth notes. The second staff continues the melody with a half rest at the start. The third staff continues the melody with a half rest at the start. The fourth staff concludes the piece with a final chord of C major.

Chord progression: Am9, Em7, Am7, Am9, Em7, Fmaj7, Am9, Fmaj7, Dm7, G, Am9, Em7, Am7, Am9, G, Aadd9, Am9, Em7, Am7, Am9, Em7, Fmaj7, Am9, Fmaj7, Dm7, G, Am9, Em7, Am7, Am9, G, Aadd9.

45 Oldtimer

AD

Musical score for '45 Oldtimer' in G major, 4/4 time. The score consists of four staves of music. The first staff has a treble clef and a key signature of one sharp (F#). The second staff has a bass clef and a key signature of one sharp (F#). The third staff has a treble clef and a key signature of one sharp (F#). The fourth staff has a bass clef and a key signature of one sharp (F#). The music is a simple melody with chords. The chords are: Em, D, Em, A, Em, D, Em, B7, C, G, Bb, F, Am6, D9, G, B7, Em, D, Em, A, Em, D, Em, B7, Am, E/G#, A/G, F#m7b5, F7, E7, F7, B7.

46 Scales and Arpeggios

The Sherman Brothers

Musical score for '46 Scales and Arpeggios' in C major, 4/4 time. The score consists of seven staves of music. The first staff has a treble clef and a key signature of no sharps or flats. The second staff has a treble clef and a key signature of no sharps or flats. The third staff has a treble clef and a key signature of no sharps or flats. The fourth staff has a treble clef and a key signature of no sharps or flats. The fifth staff has a treble clef and a key signature of no sharps or flats. The sixth staff has a treble clef and a key signature of no sharps or flats. The seventh staff has a treble clef and a key signature of no sharps or flats. The music is a simple melody with chords. The chords are: C, G7, C, C, F, F#dim, G, C, C, G7, C, C, F, F#dim, C/G, G, C, F, G7, C, F, G, C, G, C, C, C, G7, C, C, F, F#dim, G, C.

Do mi so do do so mi do Ev'-ry tru-ly cul-tured mu-sic stu-dent knows: You must learn your scales and your ar-peg - gi - os. Bring the mu-sic ring-ing from your chest and not your nose, while you sing your scales and your ar - peg - gi - os.

If your faith-ful to your dai-ly prac-ti - cing You will find your pro-gress is en - cou - ra - ging

Do mi sol mi do mi sol mi fa la sol it goes When you do your scales and your ar - peg - gi - os.

Do mi so do do so mi do Ev'-ry tru-ly cul-tured mu-sic stu-dent knows: You must learn your scales and your ar-peg - gi - os. Bring the mu-sic ring-ing from your chest and not your nose, while you sing your scales and your ar - peg - gi - os.

47 Happy Scales

AD

Musical score for '47 Happy Scales' in C major, 4/4 time. The score consists of six staves of music. The first two staves show the main melody with notes and rests. The third and fourth staves show a bass line with chords: C, C/E, F, G7, C, C/E, F, G7. The fifth and sixth staves show the melody again, identical to the first two staves.

48 Let's Boogie

AD

Musical score for '48 Let's Boogie' in D major, 4/4 time. The score consists of six staves of music. The first staff is marked 'N.C.' and shows a rhythmic pattern. The second and third staves show a bass line with chords: D7, D°, D7, G., C7, G. The fourth and fifth staves show the melody with notes and rests. The sixth staff shows the bass line with chords: D7, C7, G7, D7, G.

49 Dreaming

AD

Musical score for '49 Dreaming' in 3/4 time. The score consists of six staves of music. The key signature has one flat (Bb) and the time signature is 3/4. The notes are primarily quarter and eighth notes, often beamed together. Chord symbols are placed above the notes. The sequence of chords across the staves is: Cmaj7, Am7, F6, Gsus, Cmaj7, Am7, F6, G7, Cmaj7; Fmaj7, Bm7-5, Em7, Am7, Dm7, G7, C, C7; Fmaj7, Bm7-5, Em7, Am7, Dm7; G7, C, Cmaj7, Am7, F6; Gsus, G, Cmaj7, Am7, F6, G7, Cmaj7; Cmaj7, Am7, F6, Gsus, Cmaj7, Am7, F6, G7, Cmaj7.

50 Samba para Lisa

AD

Musical score for '50 Samba para Lisa' in common time (C). The score consists of five staves of music. The key signature has one flat (Bb). The notes are primarily quarter and eighth notes. Chord symbols are placed above the notes. The sequence of chords across the staves is: C, Am, Dm, G7, C, Am, Dm, G7; C, Am, Dm, G7, C, Am, Dm, G, C; Fmaj7, Em7, Dm7, G7, Cmaj7, Fmaj7, Em7, D7, G7; C, Am, Dm, G7, C, Am, Dm, G7; C, Am, Dm, G7, C, Am, Dm, G, C.