

Mittelstufenprüfung Fagott

Tonleitern und Dreiklänge

Ausführung: non legato, legato, portato & staccato

Zu Spielen sind 2 Dur, 2 Moll und die Chromatische Tonleiter

Bei der Prüfung sind NUR Tonleitern mit 4 und 5 Vorzeichen



♩ = 108

C-Dur

Musical staff for C major scale and triads. The scale is written in bass clef with a key signature of one sharp (F#). The first part shows the scale ascending and descending. The second part shows triads: C major, D minor, E minor, F major, G major, A minor, B minor, and C major.

G-Dur

Musical staff for G major scale and triads. The scale is written in bass clef with a key signature of two sharps (F# and C#). The first part shows the scale ascending and descending. The second part shows triads: G major, A minor, B minor, C major, D major, E minor, F# minor, and G major.

D-Dur

Musical staff for D major scale and triads. The scale is written in bass clef with a key signature of two sharps (F# and C#). The first part shows the scale ascending and descending. The second part shows triads: D major, E minor, F# minor, G major, A major, B minor, C# minor, and D major.

A-Dur

Musical staff for A major scale and triads. The scale is written in bass clef with a key signature of three sharps (F#, C#, and G#). The first part shows the scale ascending and descending. The second part shows triads: A major, B minor, C# minor, D major, E major, F# minor, G# minor, and A major.

E-Dur

Musical staff for E major scale and triads. The scale is written in bass clef with a key signature of four sharps (F#, C#, G#, and D#). The first part shows the scale ascending and descending. The second part shows triads: E major, F# minor, G# minor, A major, B major, C# minor, D# minor, and E major.

H-Dur

Musical staff for H major scale and triads. The scale is written in bass clef with a key signature of four sharps (F#, C#, G#, and D#). The first part shows the scale ascending and descending. The second part shows triads: H major, A# minor, B# minor, C major, D major, E# minor, F# minor, and H major.

F-Dur

Musical staff for F major scale and triads. The scale is written in bass clef with a key signature of one flat (Bb). The first part shows the scale ascending and descending. The second part shows triads: F major, G minor, A minor, Bb major, C major, D minor, Eb major, and F major.

B-Dur

Musical staff for B major scale and triads. The scale is written in bass clef with a key signature of two flats (Bb and Eb). The first part shows the scale ascending and descending. The second part shows triads: B major, C minor, D minor, Eb major, F major, G minor, Ab major, and B major.

Es-Dur

Musical staff for Es major scale and triads. The scale is written in bass clef with a key signature of three flats (Bb, Eb, and Ab). The first part shows the scale ascending and descending. The second part shows triads: Es major, F minor, G minor, Ab major, Bb major, C minor, Db major, and Es major.

As-Dur

Musical staff for As major scale and triads. The scale is written in bass clef with a key signature of four flats (Bb, Eb, Ab, and Db). The first part shows the scale ascending and descending. The second part shows triads: As major, Bb minor, Cb minor, Db major, Eb major, F minor, Gb major, and As major.

Des-Dur

Musical notation for the Des-Dur scale in bass clef. The scale is written in a single line, starting with a bass clef and a key signature of two flats (B-flat and E-flat). The notes are: D2, E2, F2, G2, A2, B2, C3, D3, E3, F3, G3, A3, B3, C4. The final measure contains a triplet of G3, A3, B3, followed by a quarter note C4.

Chromatische Tonleiter

Musical notation for the chromatic scale in bass clef. It consists of two staves. The top staff shows the ascending chromatic scale from D2 to C4, with sharps for F#2, C#3, G#3, and D#4. The bottom staff shows the descending chromatic scale from C4 to D2, with flats for Bb3, Fb3, Cb3, and Gb2.

a-Moll - natürlich

Musical notation for the natural a-Moll scale in bass clef. The scale is written in a single line, starting with a bass clef and a key signature of three flats (B-flat, E-flat, and A-flat). The notes are: A2, Bb2, C3, D3, Eb3, F3, G3, Ab3, Bb3, C4, D4, Eb4, F4, G4, Ab4, Bb4, C5. A long slur covers the entire scale.

a-Moll - harmonisch

Musical notation for the harmonic a-Moll scale in bass clef. The scale is written in a single line, starting with a bass clef and a key signature of three flats. The notes are: A2, Bb2, C3, D3, Eb3, F3, G3, Ab3, Bb3, C4, D4, Eb4, F4, G4, Ab4, Bb4, C5. The notes Eb3, Ab3, and Bb4 are marked with a bar over them.

a-Moll - melodisch

Musical notation for the melodic a-Moll scale in bass clef. The scale is written in a single line, starting with a bass clef and a key signature of three flats. The notes are: A2, Bb2, C3, D3, Eb3, F3, G3, Ab3, Bb3, C4, D4, Eb4, F4, G4, Ab4, Bb4, C5. The final measure contains a triplet of G4, Ab4, Bb4, followed by a quarter note C5.

Vorschlag für Artikulation

e-Moll - natürlich

Musical notation for the natural e-Moll scale in bass clef. The scale is written in a single line, starting with a bass clef and a key signature of one flat (B-flat). The notes are: E2, F2, G2, Ab2, Bb2, C3, D3, Eb3, F3, G3, Ab3, Bb3, C4, D4, Eb4, F4, G4, Ab4, Bb4, C5. The final measure contains a quarter note C5.

e-Moll - harmonisch

Musical notation for the harmonic e-Moll scale in bass clef. The scale is written in a single line, starting with a bass clef and a key signature of one flat. The notes are: E2, F2, G2, Ab2, Bb2, C3, D3, Eb3, F3, G3, Ab3, Bb3, C4, D4, Eb4, F4, G4, Ab4, Bb4, C5. The notes Eb3 and Bb4 are marked with a bar over them.

e-Moll - melodisch

Musical notation for the melodic e-Moll scale in bass clef. The scale is written in a single line, starting with a bass clef and a key signature of one flat. The notes are: E2, F2, G2, Ab2, Bb2, C3, D3, Eb3, F3, G3, Ab3, Bb3, C4, D4, Eb4, F4, G4, Ab4, Bb4, C5. The final measure contains a triplet of G4, Ab4, Bb4, followed by a quarter note C5.

h-moll - natürlich



h-moll - harmonisch



h-moll - melodisch



fis-Moll - natürlich



fis-Moll - harmonisch



fis-Moll - melodisch



cis-Moll - natürlich



cis-Moll - harmonisch



cis-Moll - melodisch



gis-Moll - natürlich



gis-Moll - harmonisch



gis-Moll - melodisch



d-Moll - natürlich



d-Moll - harmonisch



d-Moll - melodisch



g-Moll - natürlich



g-Moll - harmonisch



g-Moll - melodisch



c-Moll - natürlich



c-Moll - harmonisch



c-Moll - melodisch



f-Moll - natürlich



f-Moll - harmonisch



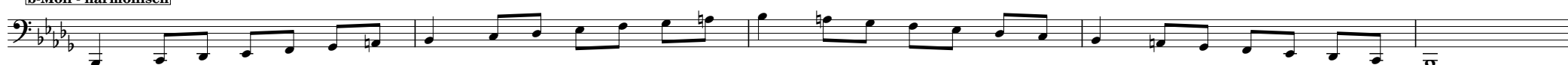
f-Moll - melodisch



b-Moll - natürlich



b-Moll - harmonisch



b-Moll - melodisch

